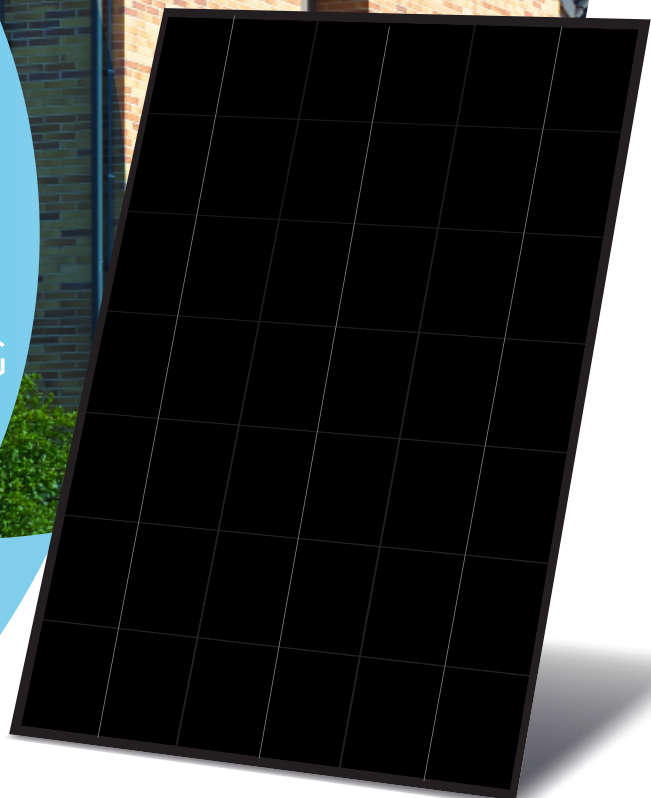




SolarQuantum

BEST CHOICE: DAH Solar

Photovoltaikmodul 420 Watt DG



Artikel-Nr.: SQ003ZE420DA

Hersteller: DAH Solar, Hefei City, Anhui, China

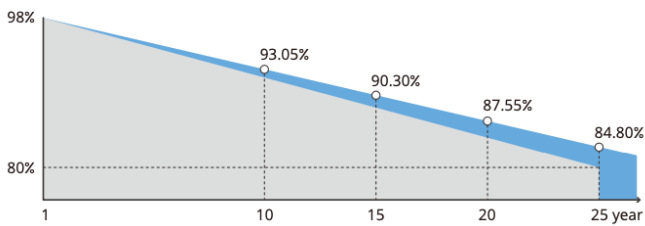
Original Datenblatt: <https://drive.google.com/drive/u/0/folders/1h63s--3vNszTzLN6PJ8ezqd5UBrOTeqY>



Seite 1

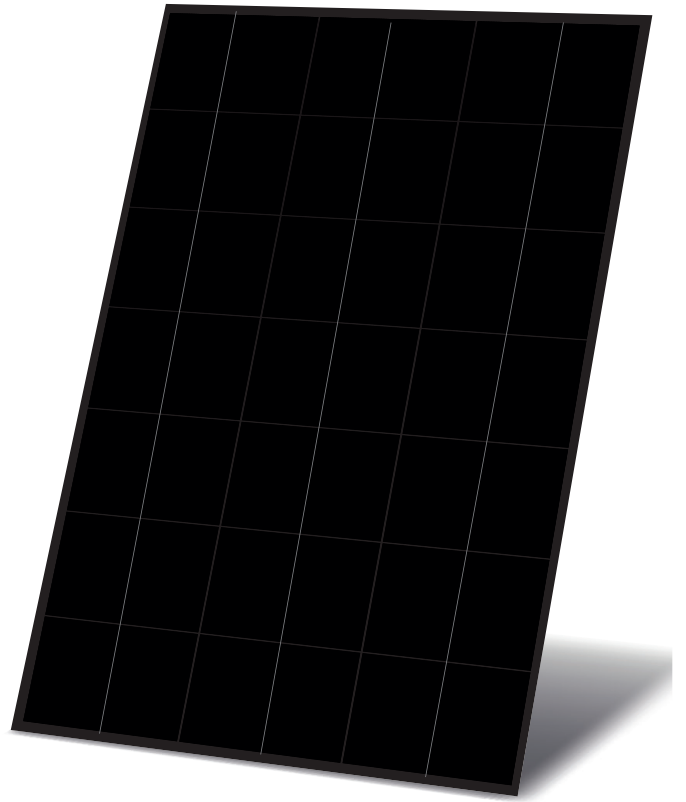
Mono Perc

DHM-66L9(BW)

Half-Cell High Efficiency PV Module



 DAH Solar linear power output guarantee
 Standard linear power output guarantee





405~420W



Optimal Process Design

166mm+9BB+Half-cut, higher power output



Select Grade A Crystalline Silicon Solar Cells

Grade A crystalline silicon solar cells make high-power output with cost-effective



Stable Generation Performance

Guaranteed 0~+5W positive tolerance and slower power attenuation:
first year $\leq 2\%$, 0.55% per year from 2-25



Process Upgraded

Lower risk of hot spot and stronger anti-PID ability



Higher Power Gains and Lower Losses

Excellent low irradiance performance and low shadow loss



Strong Environmental Adaptability and Great Durability

Certified by Dust-Sand, Salt-Mist, Ammonia etc. weather resistance tests and enhanced mechanical load: wind load (2400 Pa) and snow load (5400 Pa)

Comprehensive Products and System Certificates

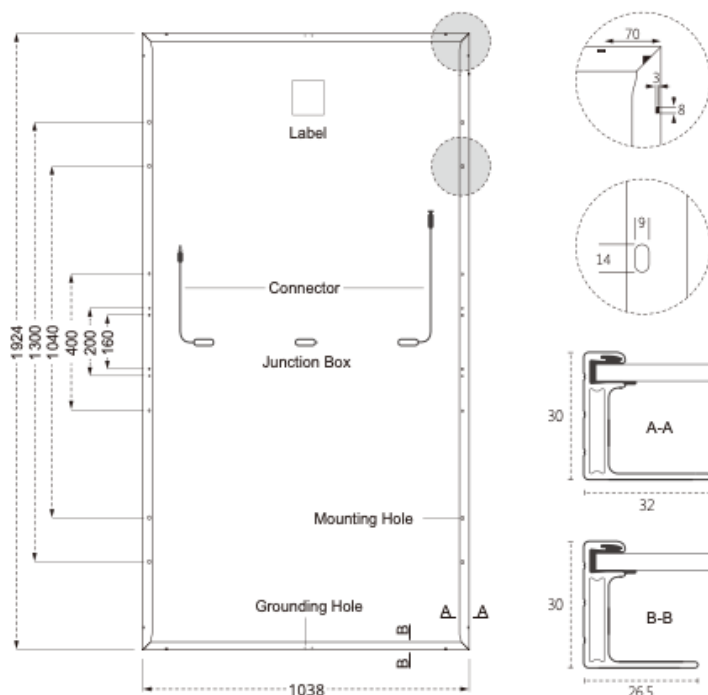


IEC 61215 / IEC 61730 / CE / FIDE / INMETRO ISO 45001-2018/International standards for occupational health & safety

ISO 14001-2015/Standards for environmental management system

ISO 9001-2015/Quality management system

DESIGN



MECHANICAL SPECIFICATION

Cells Type
Mono 166×83mm

Weight
22kg

Cable
(Including connector)
No. of Cells
Glass
Junction box
Connector

Dimension (L×W×T)
1924×1038×30mm

Packing
**36pcs/pallet,
864pcs/40HQ**

4.0mm², Portrait:
300mm(+)/400mm(-)
Landscape:
1400mm(+)/1400mm(-)
132 (6×22)
3.2mm High Transmissi-
on, Antireflection Coating
IP68, 3 Bypass Diodes
MC4 Compatible

OPERATING PARAMETERS

Maximum system voltage	1500V DC
Operating Temperature	-40 ~ +85°C
Maximum series fuse rating	20A
Snow load, frontside	5400Pa
Wind load, backside	2400Pa
Nominal operating cell temperature	45°C±2°C
Application level	Class A

STRUCTURE OF THE PANEL

double glass

OPERATING PARAMETERS

Module Typ

Maximum Power (Pmax)	420
Open-circuit Voltage (Voc)	45.6
Maximum Power Voltage (Vmp)	38.0
Short-circuit Current (Isc)	11.48
Maximum Power Current (Imp)	11.05
Module Efficiency (%)	21.03
Temperature Coefficient of Isc	0.05%/°C
Temperature Coefficient of Voc	-0.31%/°C
Temperature Coefficient of Pmax	-0.35%/°C

Standard Test Environment : Irradiance 1000W/m², Cell temperature 25°C, Spectrum AM1.5

Warranty 12 Jahre

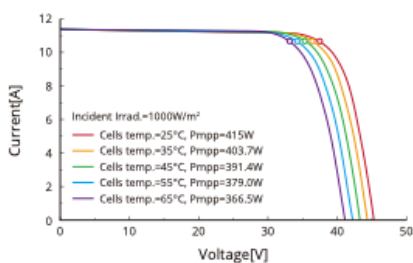
NOCT-Electrical Characteristics

Maximum Power (Pmax)	312
Open-circuit Voltage (Voc)	42.8
Maximum Power Voltage (Vmp)	35.6
Short-circuit Current (Isc)	9.28
Maximum Power Current (Imp)	8.77

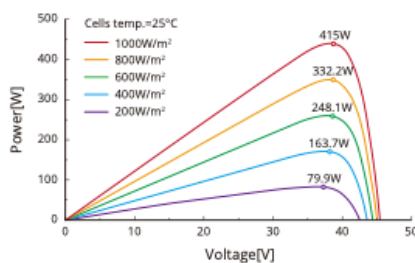
Standard Test Environment : Irradiance 800W/m², Ambient temperature 20°C, Spectrum AM1.5, Wind speed 1m/s

I-V CURVE

Current-Voltage Curve



Power-Voltage Curve



Current-Voltage Curve

